

Serenity Release

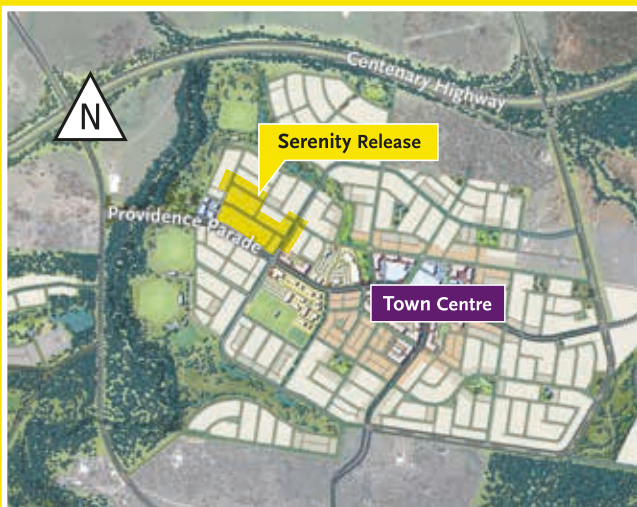
.....

Nestled in a quiet corner of Providence and close to the meandering Bundamba Creek and parklands, you will find The Serenity Release. Featuring a range of allotments including Courtyards, Villas and Traditionals, there is something to suit all lifestyles and budgets.



PROVIDENCE

Heart & Soul of the Valley



Land Sales & Information Centre, Ripley Rd (off Centenary Highway, South Ripley)

Phone 1800 604 246 info@providenceripley.com.au providenceripley.com.au

Amex Corporation Pty Ltd and Daleswan Pty Ltd, their related bodies corporate and associated entities, their directors and officers, employees and agents (Amex) give no warranty that the information contained in this 'document' is, or will remain accurate, complete and current. Images are given as a visual aid, and are indicative only. Plans are subject to final design and council approval, and are not necessarily to scale. To the extent permitted by law, Amex excludes all liability for any loss which arises as a result of any reliance on the information contained in this presentation or otherwise in connection with it. Printed May 2014.

